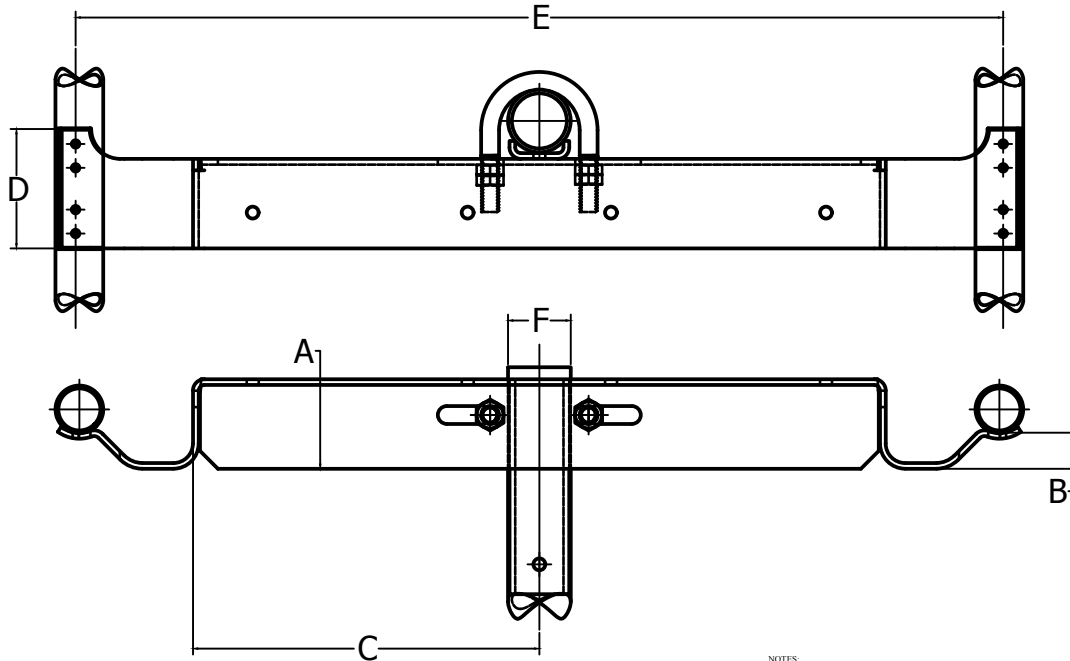


TABLE												
Part No.	Size	A	B	C	D	E	F	Load Ex Side	Mtct	Finish	Wt Per 100 Pcs	Pcs Per Carton
1464-3	1" I.P.S.	1 7/8"	1/2"	7 1/4"	2 1/2"	18"	1 5/16"	300 lbs	STEEL	ZINC PLATED	335 lbs	15
1459-0	1" I.P.S.	1 7/8"	1/2"	10 1/4"	2 1/2"	24"	1 5/16"	300 lbs	STEEL	ZINC PLATED	435 lbs	10
1460-0	1" I.P.S.	1 7/8"	1/2"	11 3/4"	2 1/2"	27"	1 5/16"	300 lbs	STEEL	ZINC PLATED	475 lbs	10
1464-2	1" I.P.S.	2 1/8"	1/2"	13 1/4"	2 1/2"	30"	1 5/16"	300 lbs	STEEL	ZINC PLATED	515 lbs	10
1461-0	1 1/4" I.P.S.	1 7/8"	1/2"	10 1/4"	2 1/2"	24"	1 21/32"	300 lbs	STEEL	ZINC PLATED	450 lbs	10
1462-0	1 1/4" I.P.S.	1 7/8"	1/2"	11 3/4"	2 1/2"	27"	1 21/32"	300 lbs	STEEL	ZINC PLATED	490 lbs	10
1463-0	1 1/4" I.P.S.	2 1/8"	1/2"	13 1/4"	2 1/2"	30"	1 21/32"	300 lbs	STEEL	ZINC PLATED	530 lbs	10
1464-0	2" I.P.S.	2 1/8"	1/2"	13 1/4"	2 1/2"	30"	2 3/8"	300 lbs	STEEL	ZINC PLATED	550 lbs	10



NOTES:
1. REMOVE ALL BURRS, SHARP EDGES AND CORNERS.

CONFIDENTIAL INFO WHITE CONVEYOR, INC. 10000 W. 10TH AVE. DENVER, CO 80202 (303) 440-1000 WWW.WHITECONVEYOR.COM		TITLE: _____ DATE: _____ DRAWN BY: _____ CHECKED BY: _____ APPROVED BY: _____	THIS PRINT IS THE PROPERTY OF WHITE CONVEYORS, INC. 10000 W. 10TH AVE., DENVER, CO 80202
---	--	---	--